

21

30

-2

2015,

CLUB

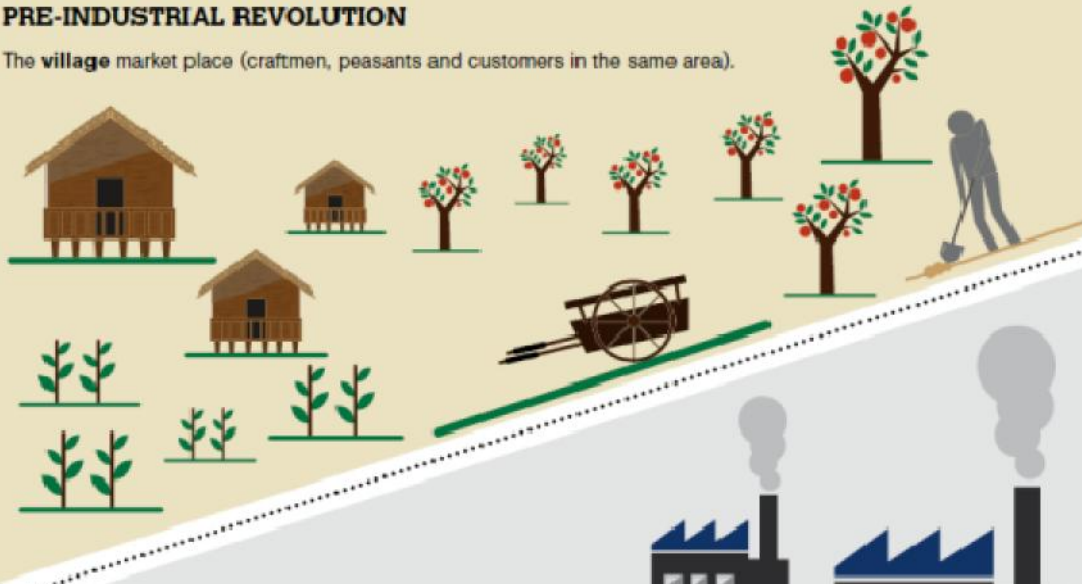
ECONOMIKA 2000



LOCAL

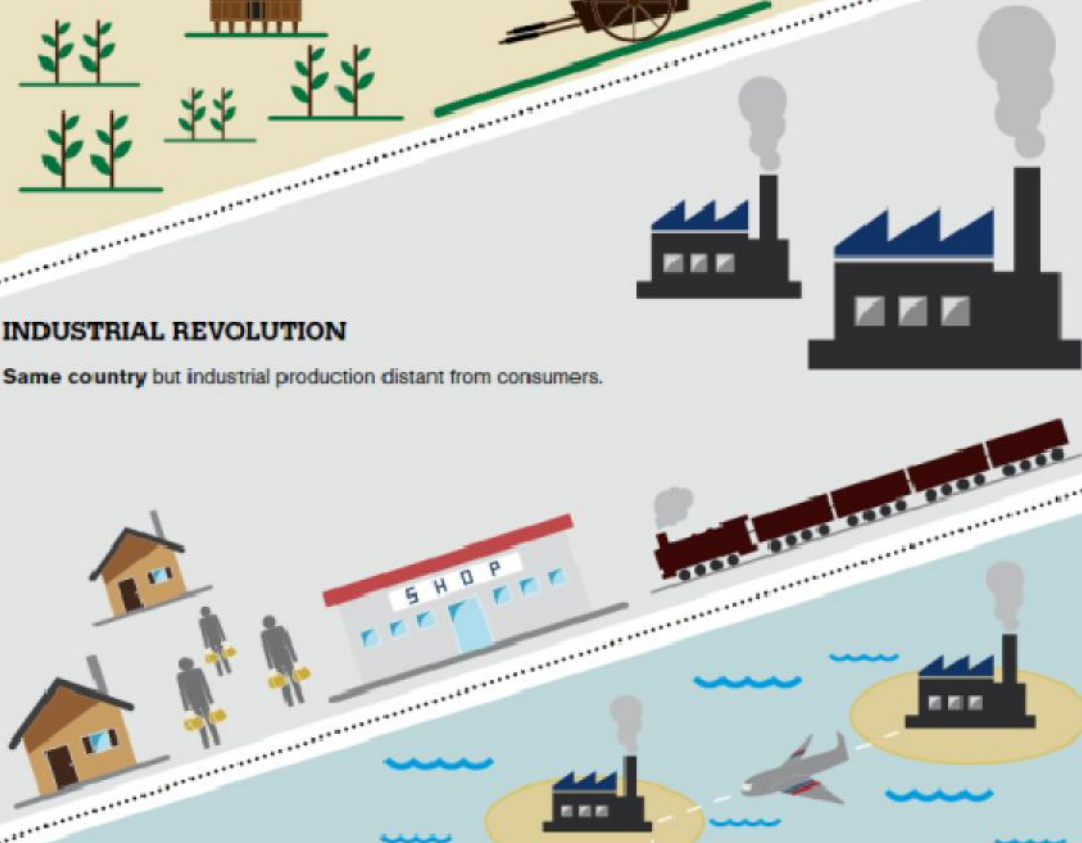
PRE-INDUSTRIAL REVOLUTION

The **village** market place (craftmen, peasants and customers in the same area).



INDUSTRIAL REVOLUTION

Same country but industrial production distant from consumers.

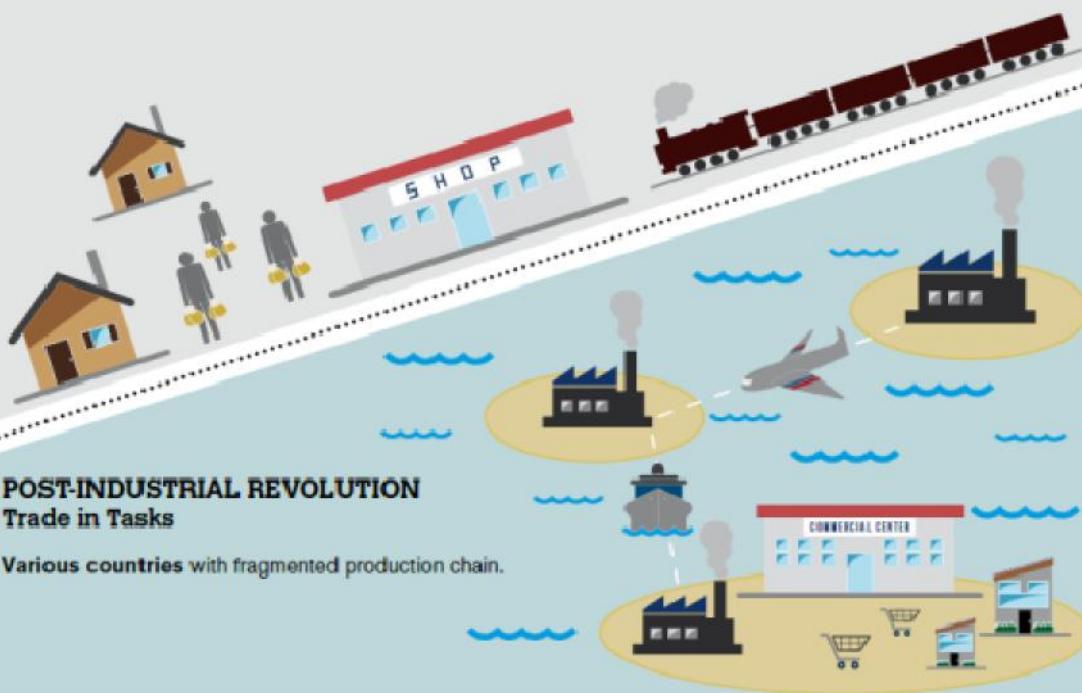


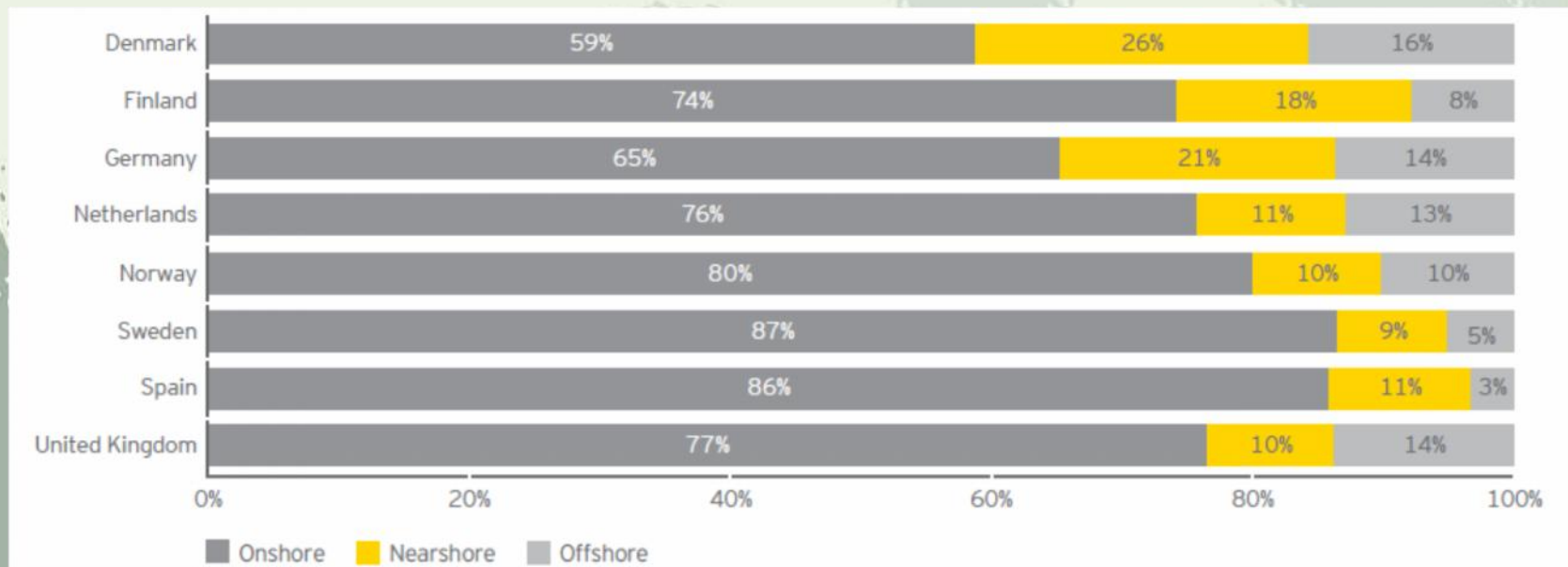
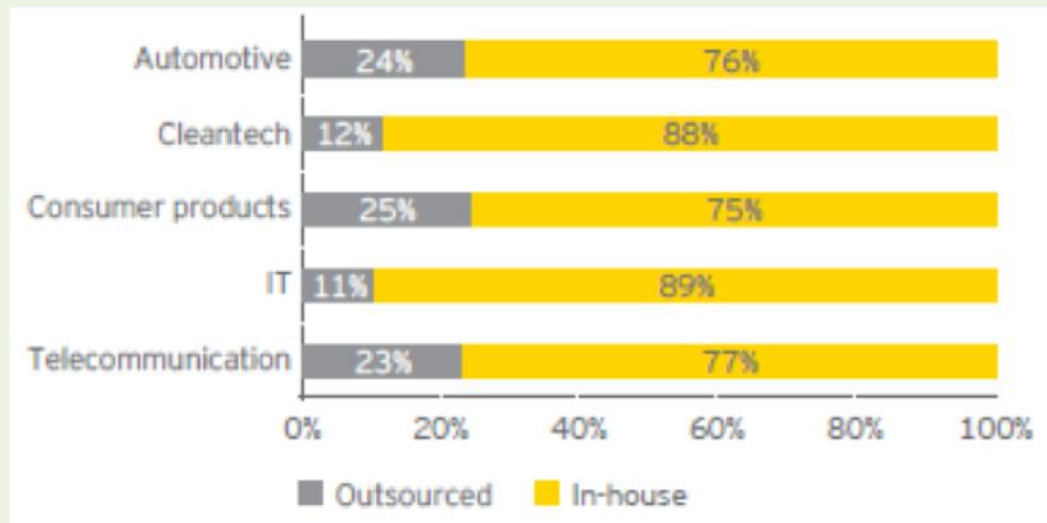
GLOBAL

POST-INDUSTRIAL REVOLUTION

Trade in Tasks

Various countries with fragmented production chain.





Country-of-Completion	Final output (US\$m) in 2008	Value added shares in 2008			Changes in shares (2008 minus 1995)		
		Domestic	Regional	Global	Domestic	Regional	Global
Germany	248,374	0.66	0.19	0.15	-0.13	0.05	0.07
France	117,710	0.60	0.24	0.16	-0.12	0.05	0.07
UK	58,855	0.64	0.18	0.17	-0.07	0.01	0.06
Spain	56,055	0.61	0.25	0.14	-0.08	0.02	0.06
Italy	52,600	0.68	0.17	0.15	-0.09	0.03	0.07

Source: Timmer et al. (2015), based on the World Input-Output Database (November 2013 release).

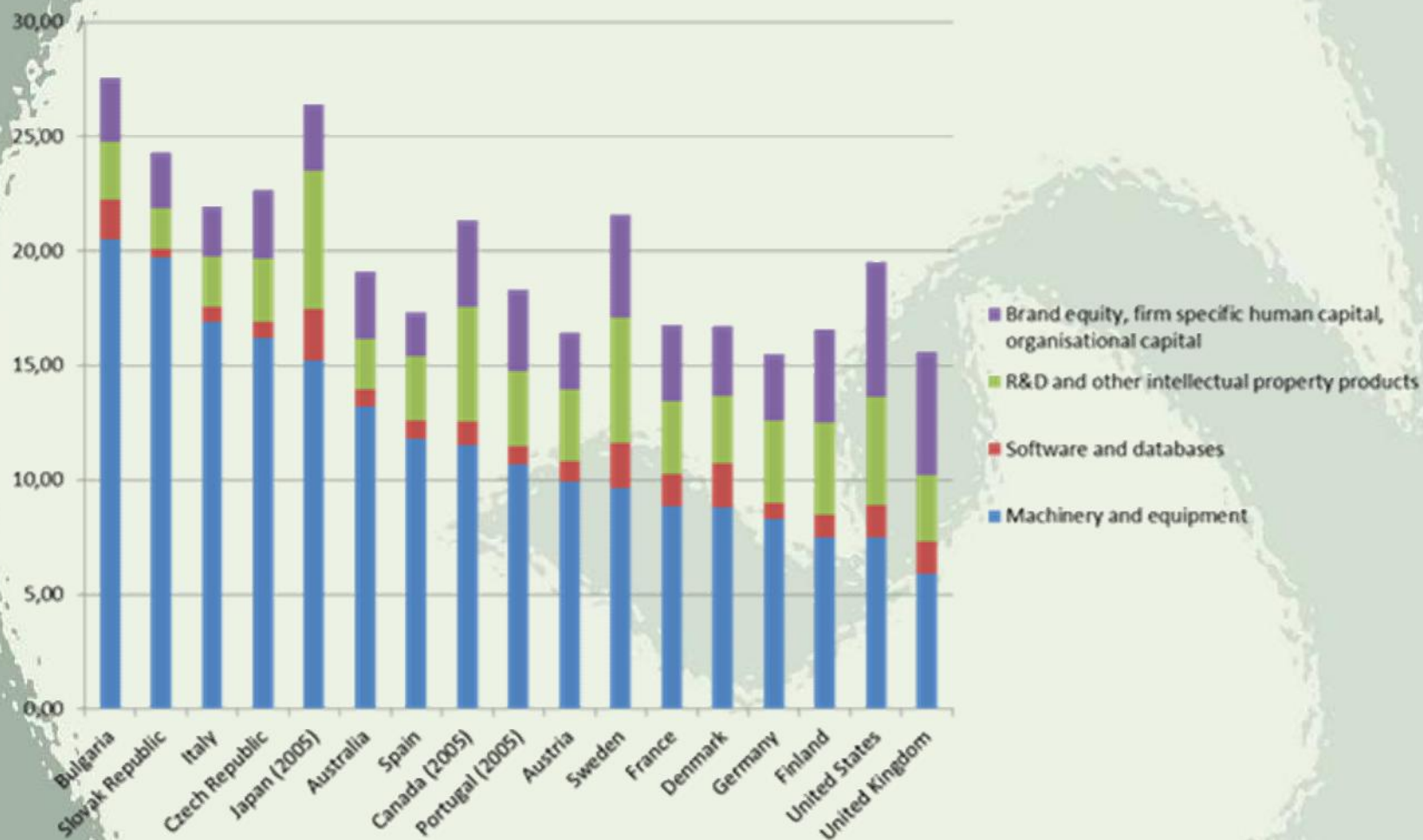
	1995	2008	2008 minus 1995
Total value added (US\$ billion) by	6,586	8,684	2,098
capital (%)	40.9	47.4	6.5
high-skilled labour (%)	13.8	15.4	1.5
medium-skilled labour (%)	28.7	24.4	-4.2
low-skilled labour (%)	16.6	12.8	-3.8

1.

2.

3.

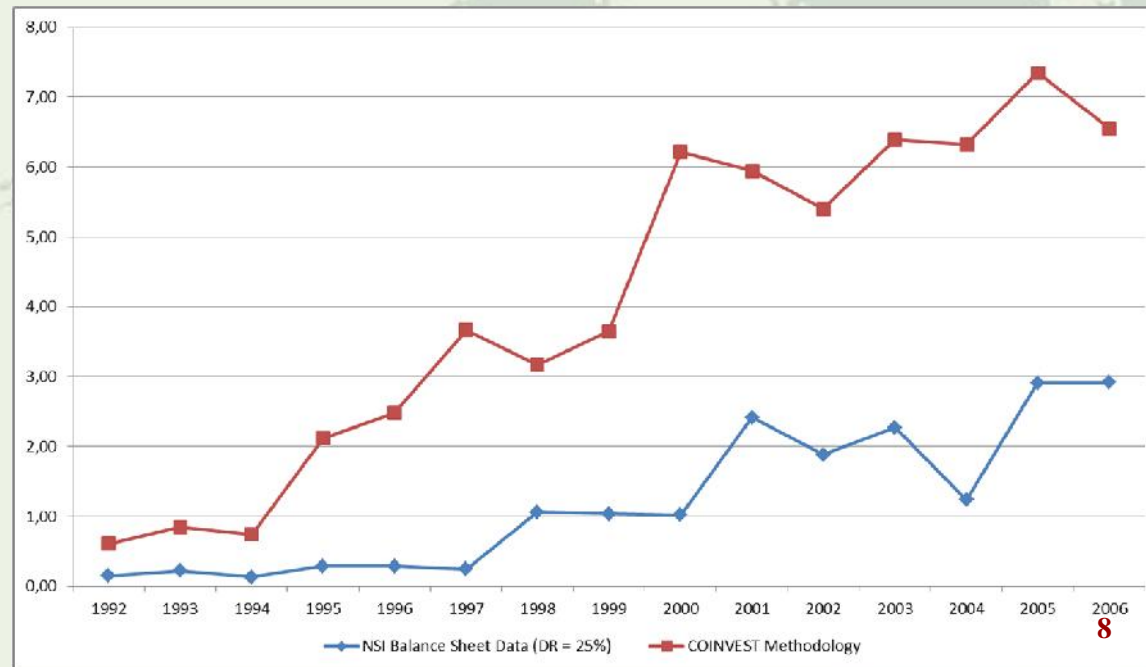
(copyright)



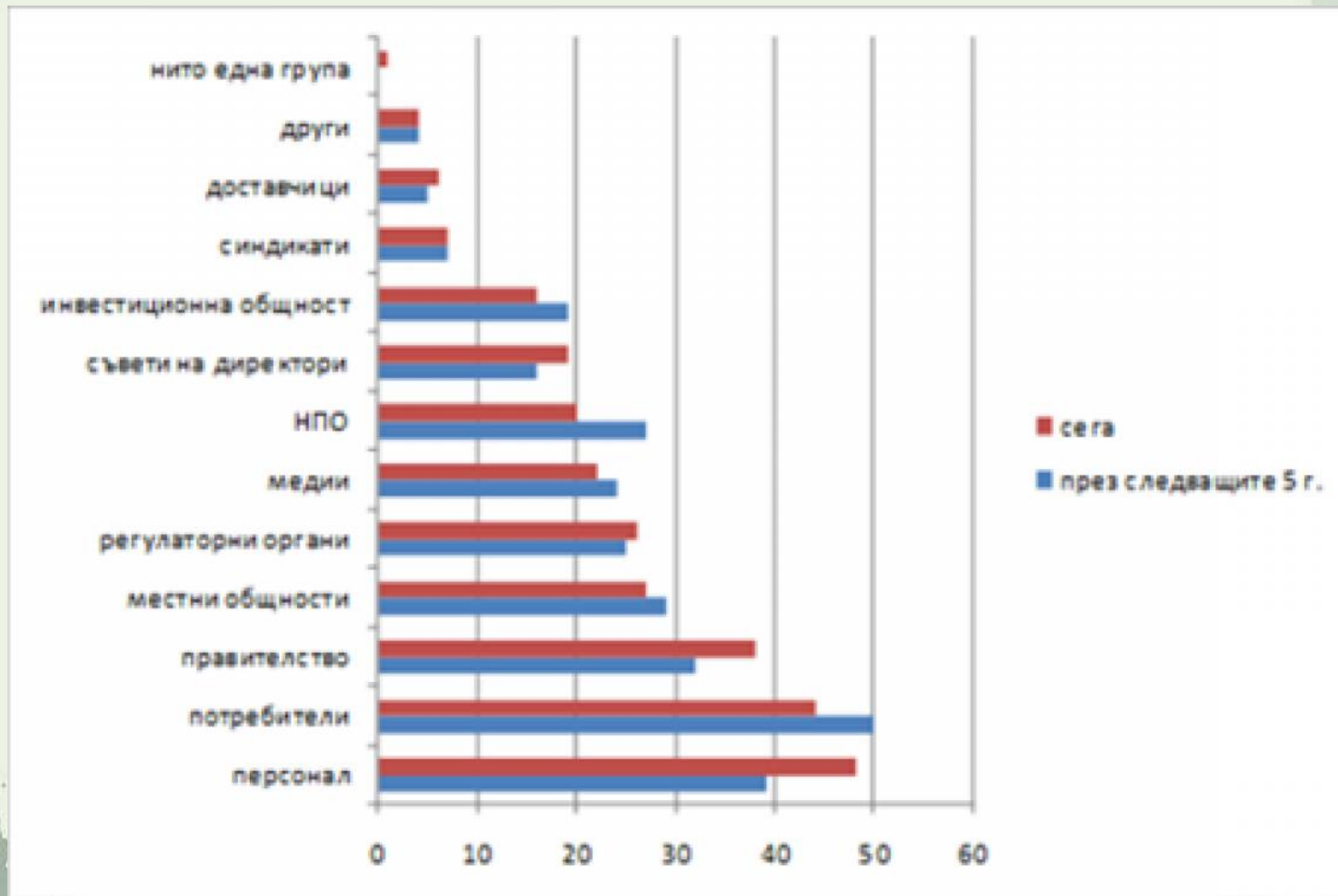
CHS

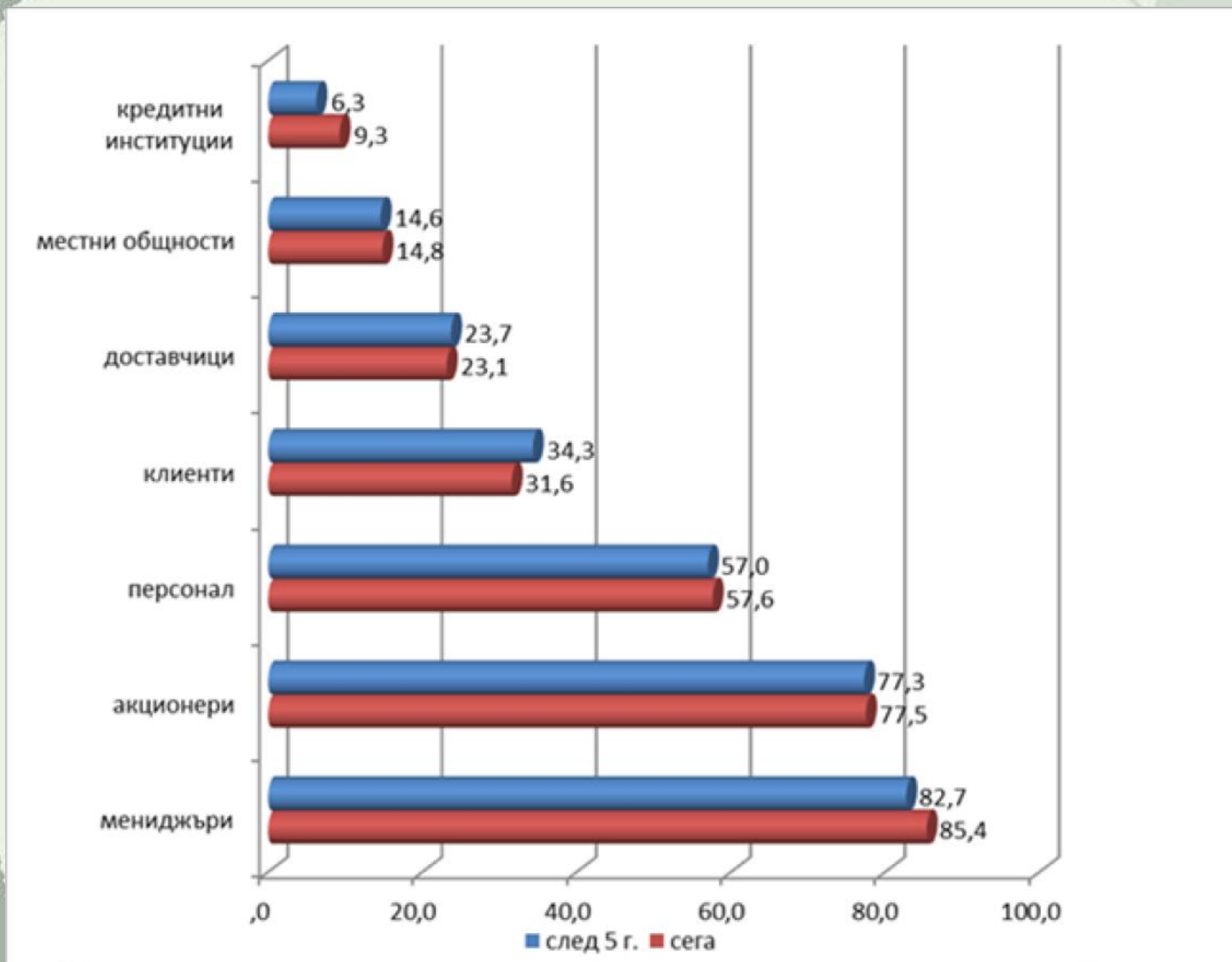
CHS

- 0.5 – 1.0% o 90- .
- 2.0 – 3.0% o 90- .
- 3.5 – 5.0% o 2000-2006 .



McKinsey





!

